



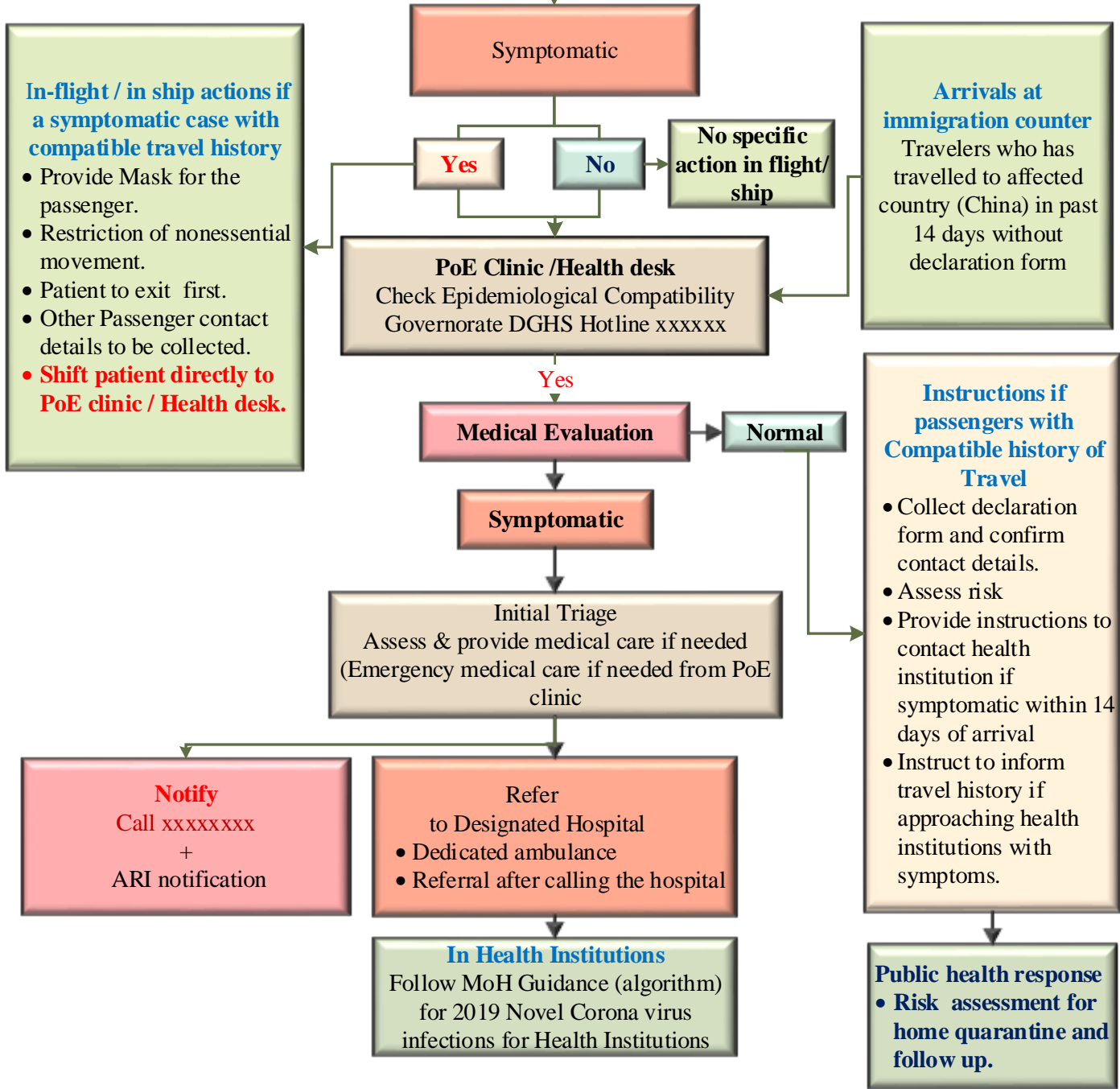
**Ministry of Health
Directorate General for Disease Surveillance & Control**

**Standard operating process for Points of Entry Surveillance & Response for
Human Infection with Novel Corona Virus (2019-nCoV)**

(Adapted from National Interim Guidance-DGDSC 2019-nCoV algorithm Version 1.0, Jan 2020)

Point of Entry(PoE):

Inbound Passengers
Announcement and requesting for completion of declaration form by passengers/crew/sailors who have travelled to / transited through affected country (China) within past 14 days
+
Request for reporting to crew if Symptoms of Fever, Cough, breathing difficulties



Ministry of Health
Sultanate of Oman

Directorate General for Disease Surveillance & Control

Incident Command Chain

Hotline Numbers

National level	Hotline	Fax
National Hotline	92199389	22357541
Surveillance (DS)		22357541
Communicable Disease (DCD)		22357539
Infection Prevention & Control (CDIPC)	91313315	22357542
Central Public Health laboratory (CPHL)	91313316	24793899
Environmental & Occupational Health (EOH)		24563121

Governorates	Hotline	Fax
Muscat	90924212	24707264
South Al Batinah	72145603	26877470
North Al Batinah	98818166	26845168
Al Buraimi	71555520	25657147
Al Dhahira	91789500	25685912
Al Dhakhliyah	90922261	25228493
North Al Sharqiyah	99101292	25576891
South Al Sharqiyah	71742120 25543996	25540188
Al Wusta	93264289	23436237
Dhofar	93531812	23230559
Musandam	99820729	26730147